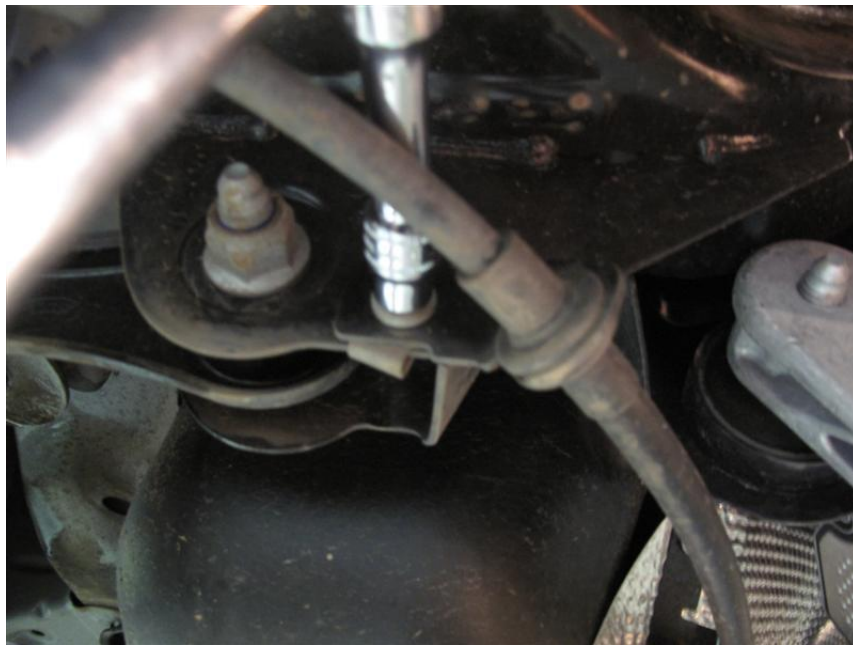


## **Mantec Freeland 2 Aluminium Tank Guard - 313-TKGFL2**

### **Installation Guidelines**

*Raise and support the vehicle on a suitable ramp or axle stands. Remove the bolt that holds the bracket for the handbrake cable on the Left hand side of the vehicle*



*Remove the bracket and the clip nut.*





*From the fitting kit, get the nut plate, left hand mounting bracket and replacement left hand handbrake cable bracket (left hand one has 3 holes in it)*

*Slide the nut plate up behind the suspension mounting. Picture of correct orientation of the nut plate below*

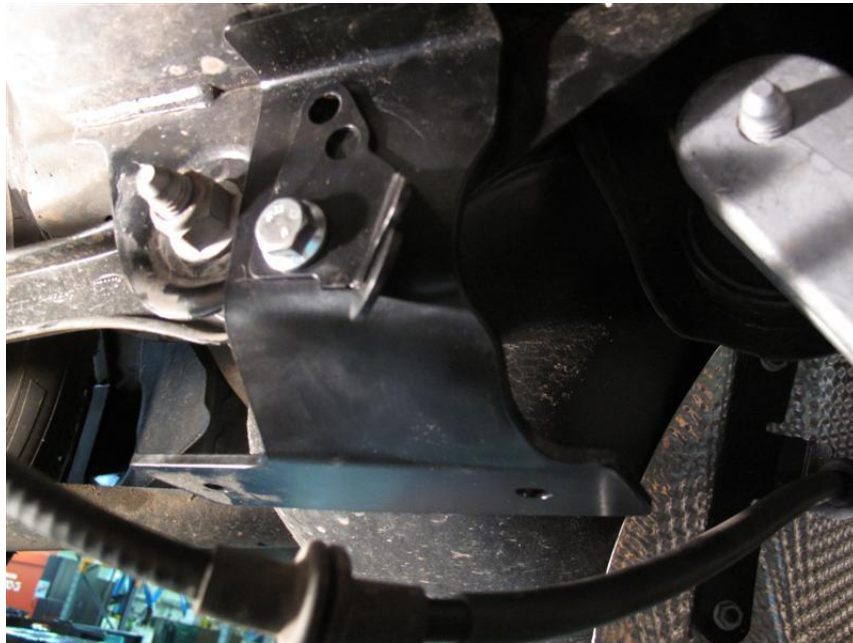


*On the LEFT side of the vehicle only, the lower hole in the mounting plate is the only one which will line up, the top hole can be drilled at the fitter's choice during installation. If drilling and using 2 fixings is desired, use the nut plate as a guide to drill the top hole in the position shown above.*

*1 fixing is considered to be ok on the Left hand side of the vehicle.*



*Next with the nut plate held on the inside, fit the left hand bracket (large black one) , the new hand brake cable bracket (3 holes in) as in the picture below*



*Next, repeat the same procedure on the right hand side of the vehicle using the remaining brackets in the fitting kit, loosely fit all bolts DO NOT tighten till instructed to do so.*

*NOTE :- on the right hand side of the vehicle, the nut plate will line up correctly with both holes in the suspension structure as in the picture below.*





*Fit right hand side nut plate, hand brake cable bracket and right hand tank guard bracket as below...*





*Ensure the handbrake cable is fully fitted back into the new mounting brackets,*



*Next, fit the new nut plates into the vehicle structure for both the left and right hand front mounting points.*

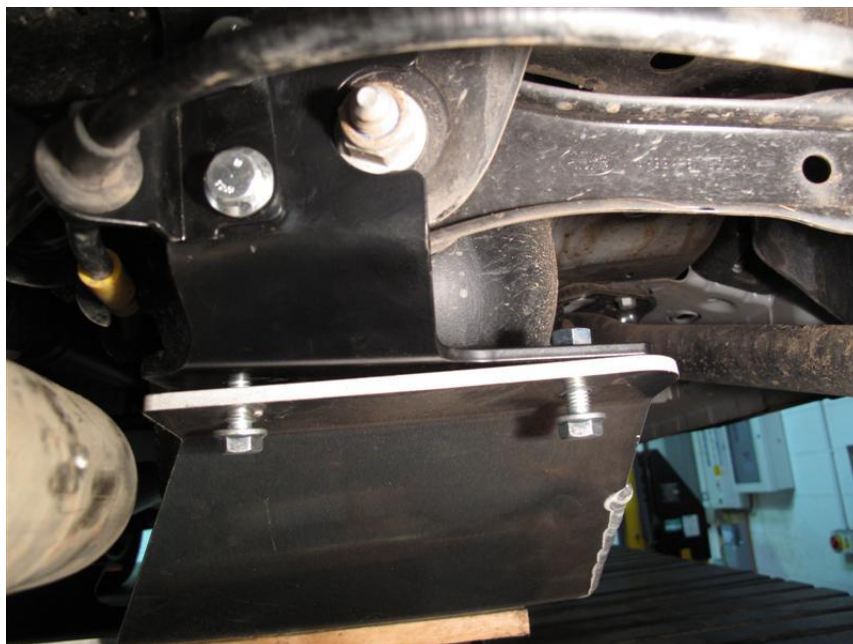




*Bracket in position below, both sides of the vehicle are the same....*



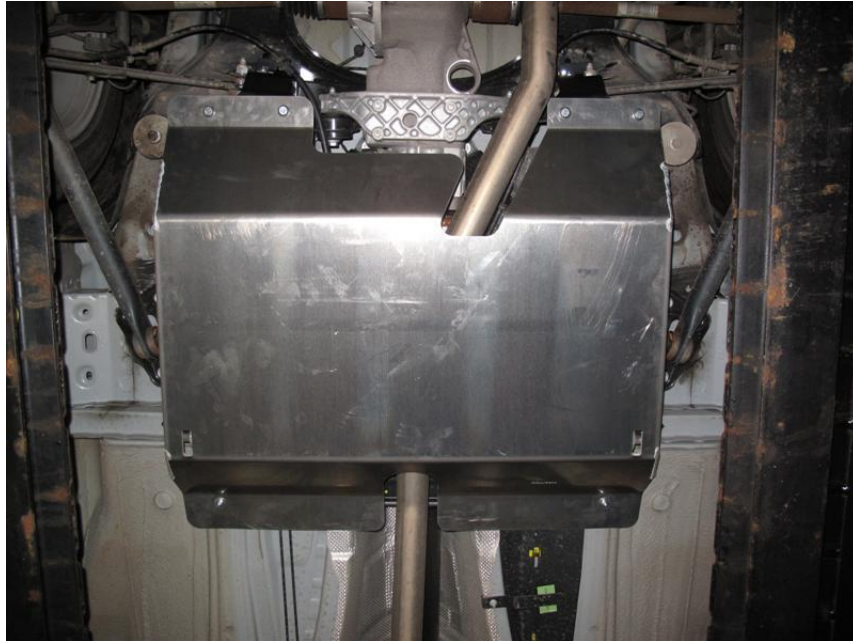
*Next, with assistance as required, lift the aluminium plate into position and loosely fit the M10 bolts, and nuts as below...*





*(right hand side shown) left hand side the same....*

*Now fit the bolts through the aluminium plate at the front into the new nut plates...(some upwards force maybe required to lift the ali guard into position)*



*Tighten the front 2 bolts, and then lift the whole guard with either a jack or block of wood to ensure the rear mounting brackets are fully up against the vehicle structure, then tighten all the remaining rear bolts.*

